

Service description

Product: SP400	Service description no: 3125-S004	Ver: 1
-------------------	---	-----------

Symptom

The impeller replacement.

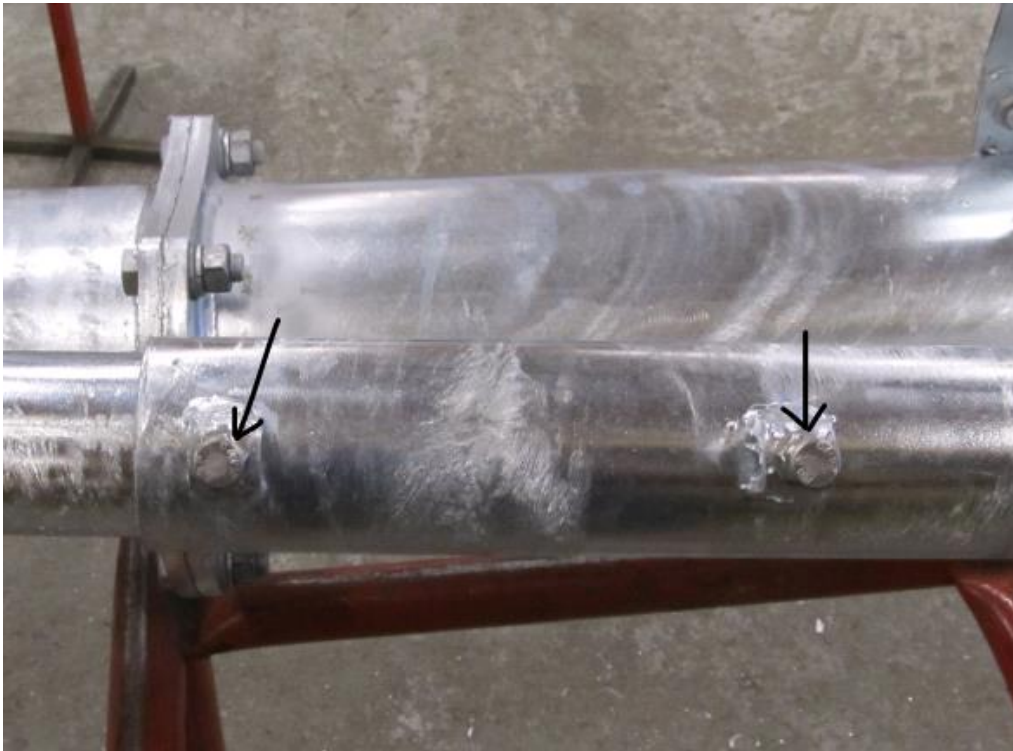
Caused by

The pump has been used a lot or something hard has damaged the wheel.

Solution

Replace the impeller with a new one.

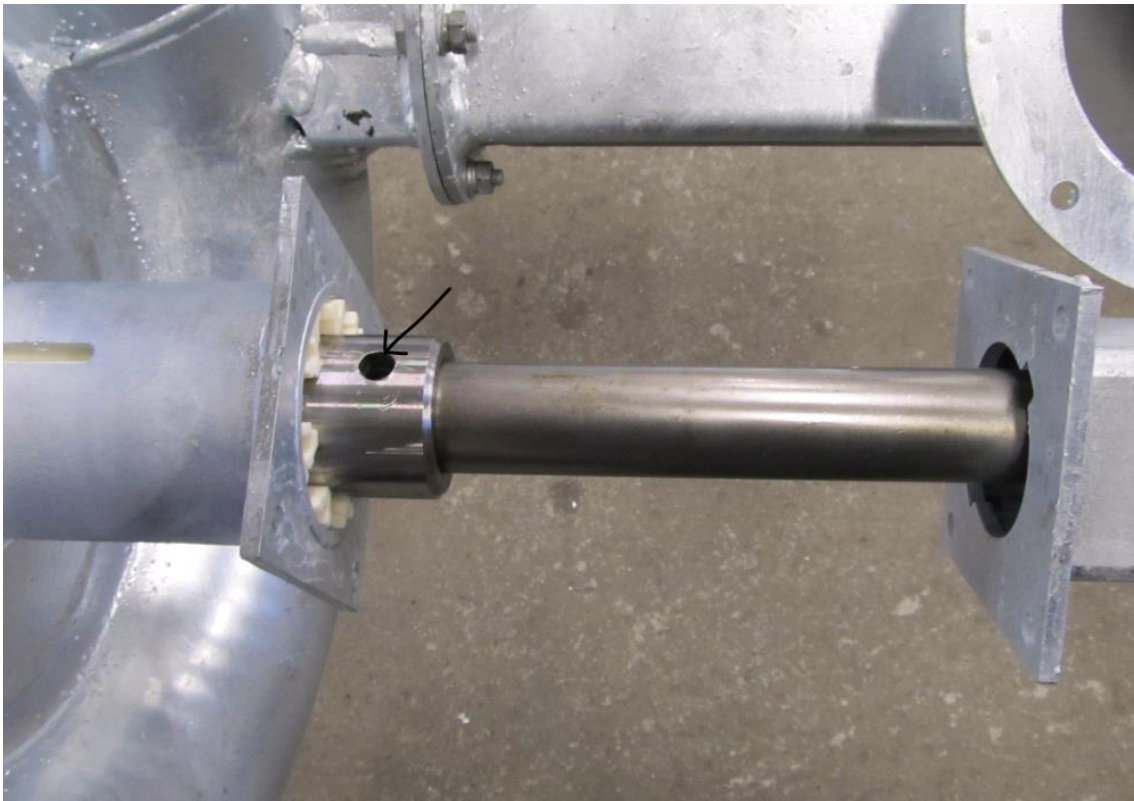
Loosen up the two set screws on the telescopic cover tube of the drive shaft.



Unscrew the four screws that secure the cover tube to the pump housing.



Detach the cover tube from the pump housing and push it upwards that the shaft will be seen. Push out the cotter pin which secures the shaft to the impeller.



Remove the cutter on the pump housing and pull the impeller out of the pump housing.



Refit the impeller and assemble the pump by following instructions in reverse order.